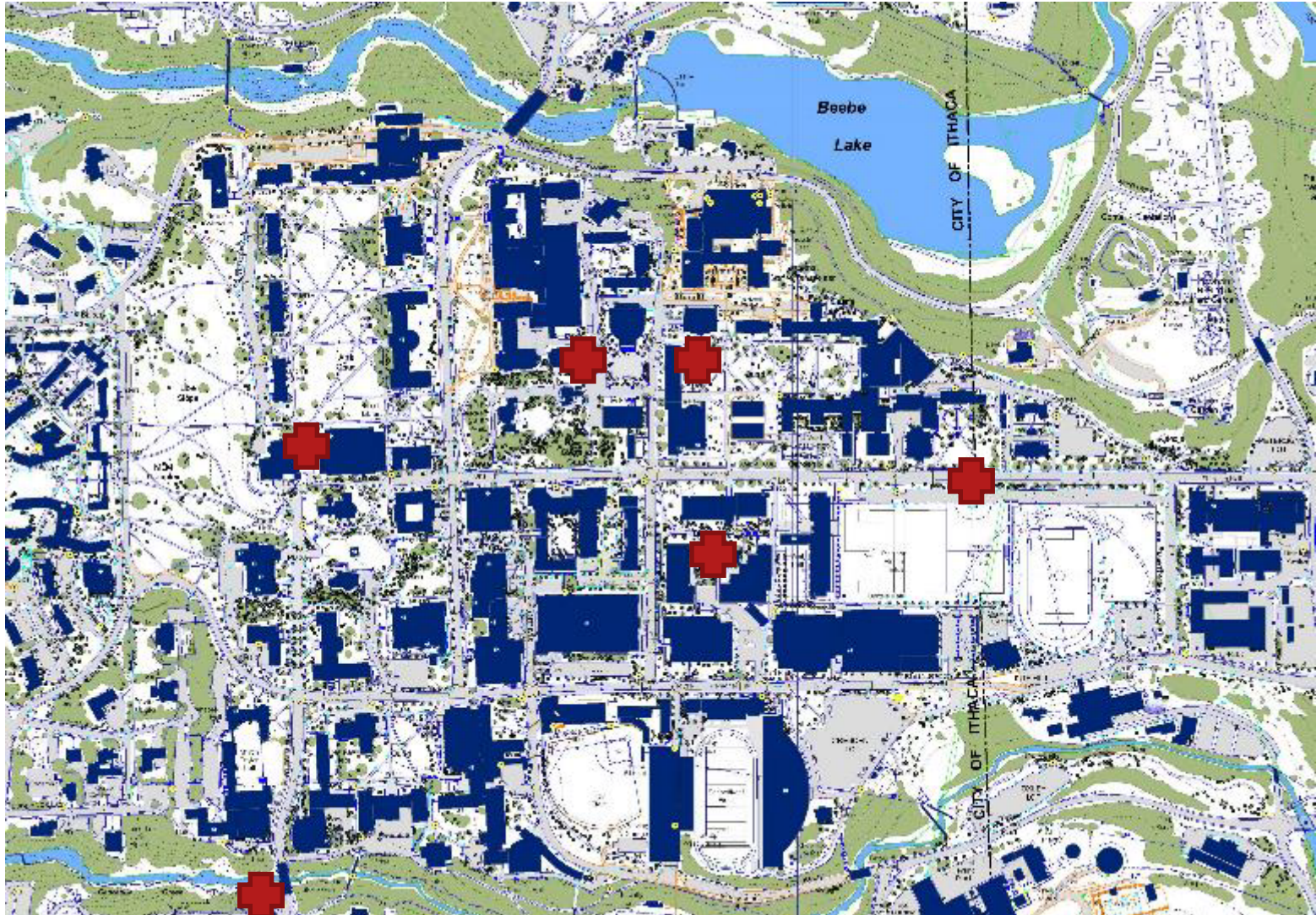


Student Engagement in the Cornell Landscape - Fall 2017



PARK(ing) Day



Arbor Day

National Tree Benefit Calculator

Beta

Thank you for choosing this site to calculate the economic and ecological benefits of your tree.



Get started:

How:

Submit

[map](#)

DAVEY 

Nature Rx

Spend Time In Nature

Research shows spending quality time in nature is good for your overall health and well-being.

Recommendations

Take a walk or run around Beebe Lake, rest on the Slope, enjoy a sunset, etc.

Frequency

☐ 1 time a week ☐ 2–3 times a week ☐ 4–5 times a week ☐ 6–7 times a week



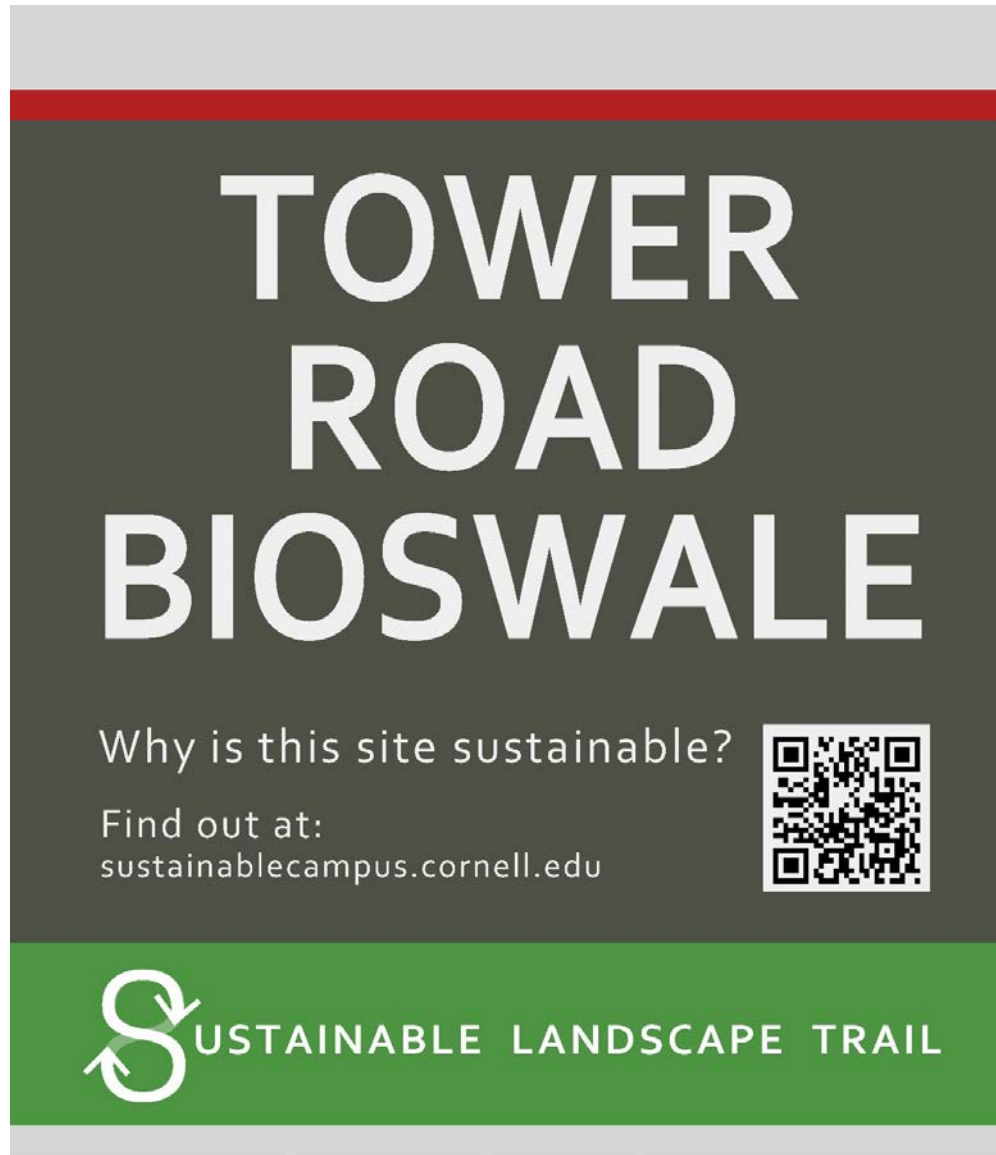
signature of Cornell Health provider

If symptoms worsen, visit health.cornell.edu or call 607-255-5155 for consultation.

Sustainable Landscape Trail



Sustainable Landscape Trail





Eddy Gate to Schwartz Plaza

Issue: Creating a more meaningful purpose and experience at Eddy Gate is a top landscape improvement initiative. There are preliminary sketches to create a more pedestrian path and plaza at the gate and enhance the walkway and amenity to Cascadilla Hall and the greater College town experience.

Eddy Gate to Schwartz Plaza

Issue: Creating a more meaningful purpose and experience at Eddy Gate is a top landscape improvement initiative. There are preliminary sketches to create a more pedestrian path and plaza at the gate and enhance the walkway and amenity to Cascadilla Hall and the greater College town experience.



Eddy Gate Site

Jiamin Chen

Schematic Plan

N↑
Scale: 1"=20'-0"



Eddy Gate Site

Yushan Chen

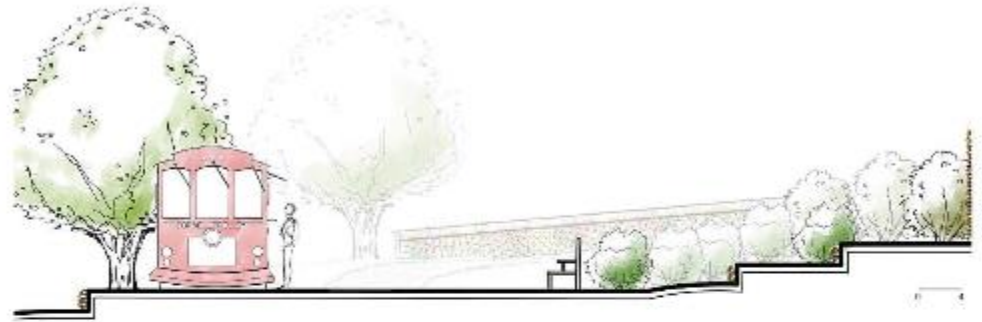
Zoom-in Plan for Eddy Gate



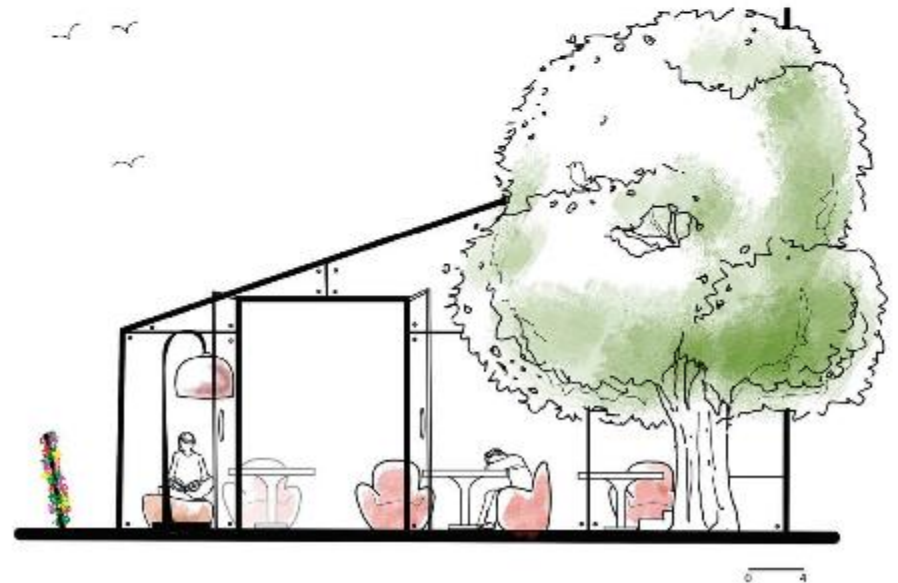
Sketch for Wall-Garden & Slope Garden



Section - 1



Section - 2



Olin – Uris Library Plaza

Issue: This prominent, centrally-located gathering space is in need of redesign to enhance the function, accessibility, aesthetics and landscape of this historic campus crossroads. The current worn, “asphalt parking lot appearance” would be upgraded into an attractively landscaped pedestrian-oriented plaza with generous use of raised, multi-seasonal flower displays and low seat walls to compliment Ho Plaza, McGraw Tower, and our grand Arts Quad.



Library Plaza Site

THE CAESURA

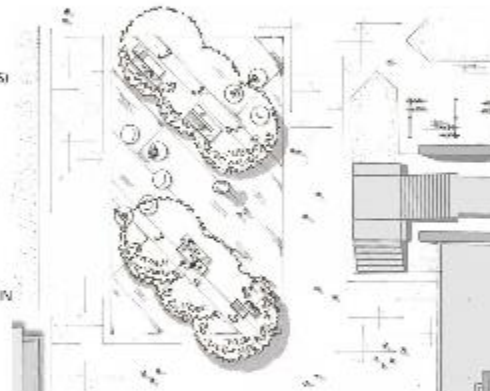
liz fabis

[noun; music]
a brief silent pause
in which time is counted

SCHEMATIC PLAN



PLAZA ENLARGEMENT



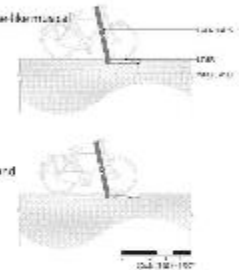
I wake at night and think I hear
Remembered chimes,
And memory brings in visions clear
Enchanted times
Beneath green elms with branches bowed
In springtime suns,
Or touching elbows in a crowd
Of eager ones:
Again I'm hurrying past the towers
Or with the teams,
Or spending precious idling hours
In golden dreams
— "The Hill" by Albert W. Smith (1878)



BIKE CHIME PARKING SCULPTURE DETAIL

WHAT IT IS:
a mod fast tool and sign-like parking post that plays a chime-like musical tone when a bike is parked

HOW IT WORKS:
Bike is placed in wheel well, depressing lever
Lever pulls wire
Wire triggers hammer
Hammer strikes interior of parking post, creating chime sound



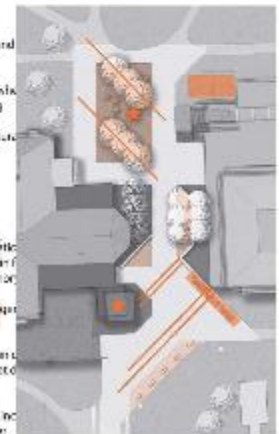
SITE ANALYSIS

- site lacks form and identity despite McGraw Tower and being a center of campus culture
- site functions both as thoroughfare and break area which are often spontaneous and conducted while standing
- site lacks hierarchy and focal points despite the cultural center of McGraw Tower and the Song of the Vowels

stoppage and vibrant pedestrian activity

DESIGN RESPONSE

- the caesura as a pavilion serves as formal, open-air, well-known gathering and meeting place, as well as a place for social interaction and collective social memory
- "caesura" have been created where social gathering and happenings occur outside of the major pedestrian flows
- McGraw Tower and the Song of the Vowels have been given focal points with novel seating structures, art, and landscaping to complement and activate
- bike parking has been consolidated at edges of site, and chime-like parking sculpture near McGraw Tower



Library Plaza Site

YUSHAN CHEN

- Seating Area and screens with hollow texts forms different views.
- Light in cylinder shaped screens, projects the texts onto the floor at nights.

- Darker paving forms a sense of flow, adding a scenery to the narrow path. Pixel pavement with book quotes engraved on giving a "flow" to follow when walking through the site during daytime.
- Light from Olin Library projects text onto the ground during night time.

- Screen forming the shape of a forward flowing waterdrop leads the direction from Ho Plaza to the site.



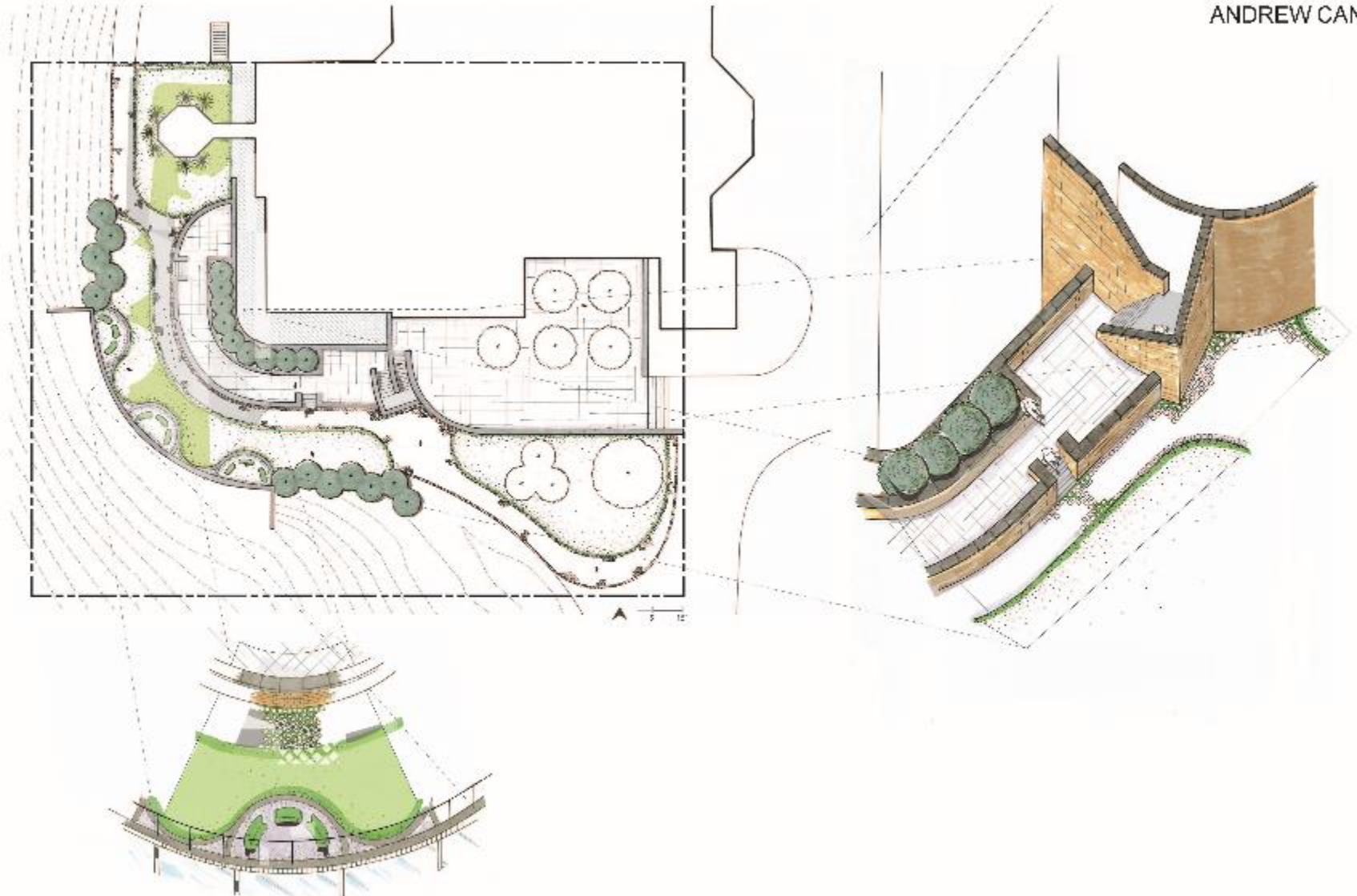


Uris Eyebrow Overlook

Issue: This is one of the great views on campus, but there is no place to sit, the asphalt path is narrow and patched and the heavy guard rail impacts the view. A paved seating and gathering area and ornamental plantings will make this spectacular vista a favored destination on campus for all.

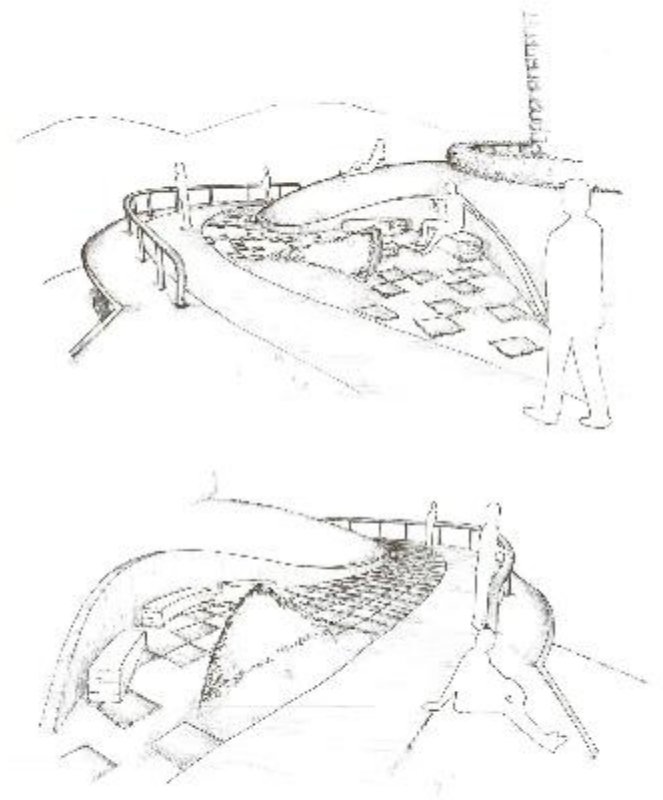
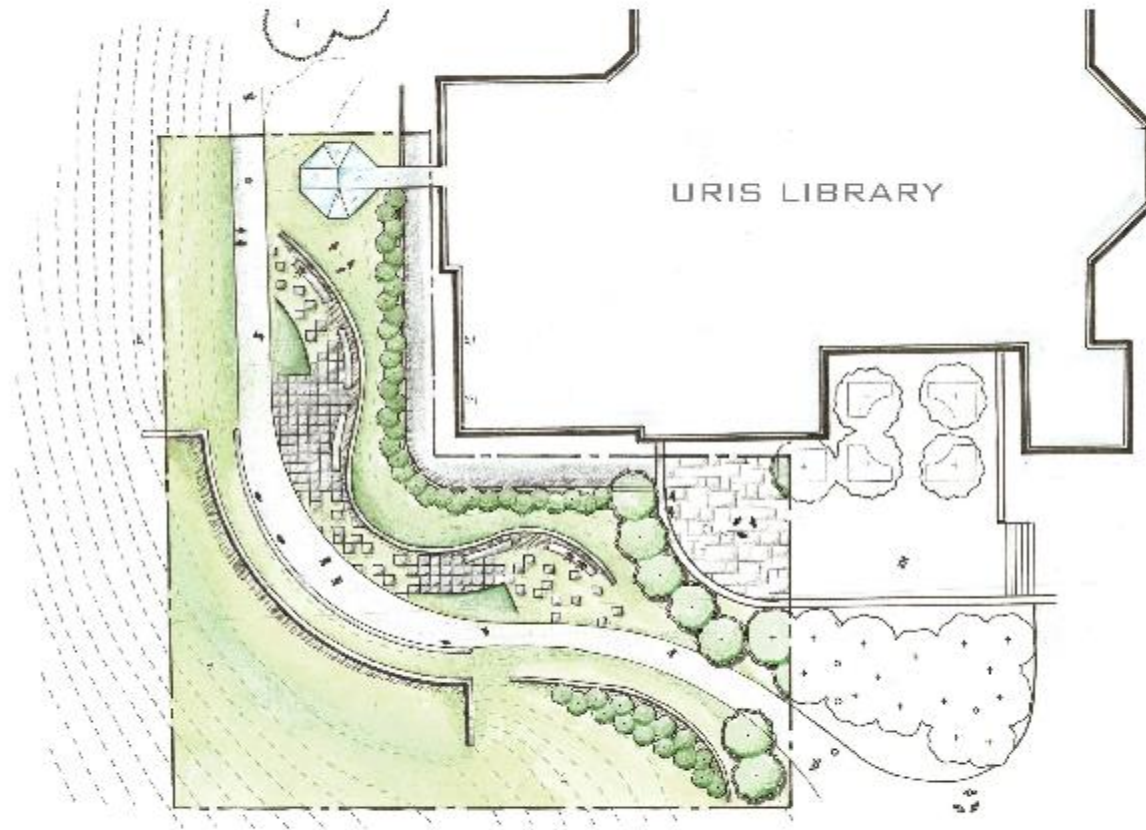
Uris Overlook Site

ANDREW CANFIELD



Uris Overlook Site

WILLIAM GOSSETT





Instagram

Search

Get the app

Sign up | Log in



cornelluniversity
Cornell University

Follow

cornelluniversity Introducing five prime new study spots! Over the summer, additional seating has been added at the Slope overlook 🌞 #Cornell

View all 22 comments

livability love this! This is why so many college towns are on our #bestplaces lists

monaanitaolsen @billygrover

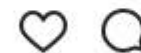
funhouselabs "In my day, we just sat in the grass!" 🤔

fluid_credit Amazing place to study!!! 📖

uday0202 Totally unnecessary. It was a place to relax and enjoy silence, now it'll be crowded and loud.

papasag Amen Brother!

mimimengwright We were just visiting last weekend & enjoyed the sunset while



4,189 likes

AUGUST 14

Log in to like or comment.



Ag Quad Site



Biology Quad Site



Biology Quad Site

Interactive Art Installation Pollinator Garden Educational Component



What new opportunities are there to
engage our students
in our landscape and planning?

