



Cornell University

# Infrastructure, Properties and Planning

**Planning for Accessibility on Campus**

**Andrea Haenlin-Mott**

**ADA Coordinator**

**October 17, 2017**





# Disability Planning on Campus

- Since 2006—Comprehensive approach to planning for accessibility
  - Prior to that approach varied
- Creation of ADA Coordinator Role for IPP
- Creation of ADA Coordinator Team—following
- Strategic Planning---Annual Plan
- 2016-2019 Streamlined Plan
  - Information Technology Accessibility
  - Educational Programming & Communication Campaign





Cornell University

# ADA Coordinator Team on Campus

- Student Disability Services
  - Kappy Fahey
- Inclusion and Workforce Diversity
  - Angela Winfield
- Infrastructure Properties and Planning
  - Andrea Haenlin-Mott



# Priorities for ADA Program

- FACT—Facilities Accessibility Compliance Tracking System:
- To address the comprehensive needs of accessibility across the Ithaca Campus, we have developed and utilized a Facility Accessibility Compliance Tracking system (FACT). This system helps to prioritize the needs for building accessibility. The four parameters that are determine when scoring a building/program/area are:
  - Public or private space
  - Number of people impacted
  - Supportive to Academic Mission
  - How transferable is the program or activity to like facility/location



# Priorities for ADA Program

- Plan review---all stages---important for planning and site development
- Readily achievable barrier removal—projects on Campus
- Collaborations—Zones and Unit Facility Directors
- Cornell Design Standards
- Event Registration Forms
- Diversity and Inclusion



# Collaboration with Campus Planning Office

- 2005 Entrance Data
- 2007 Path of Travel Data
- Updated Path of Travel Data 2015
- 2017 Data Improvement and Interactive Map

# Accessibility Map of Cornell

Accessibility Map of Cornell

Find address or place



Switch Basemap



## Legend

### Accessibility Base Map Bus Stops



### Building Entrances

- Accessible Entrance
- Other Entrance

### Crosswalk



### Path of Travel

- Steep
- Preferred
- Stair

### Parking

- General Accessible - No CU Permit Required
- General Accessible - CU Permit Required
- Access Aisle
- Metered Accessible
- Reserved Accessible
- Event Accessible Parking After 5pm

### Bldg\_Under\_Construction



### CU Buildings



### Base Map

#### Underground Building

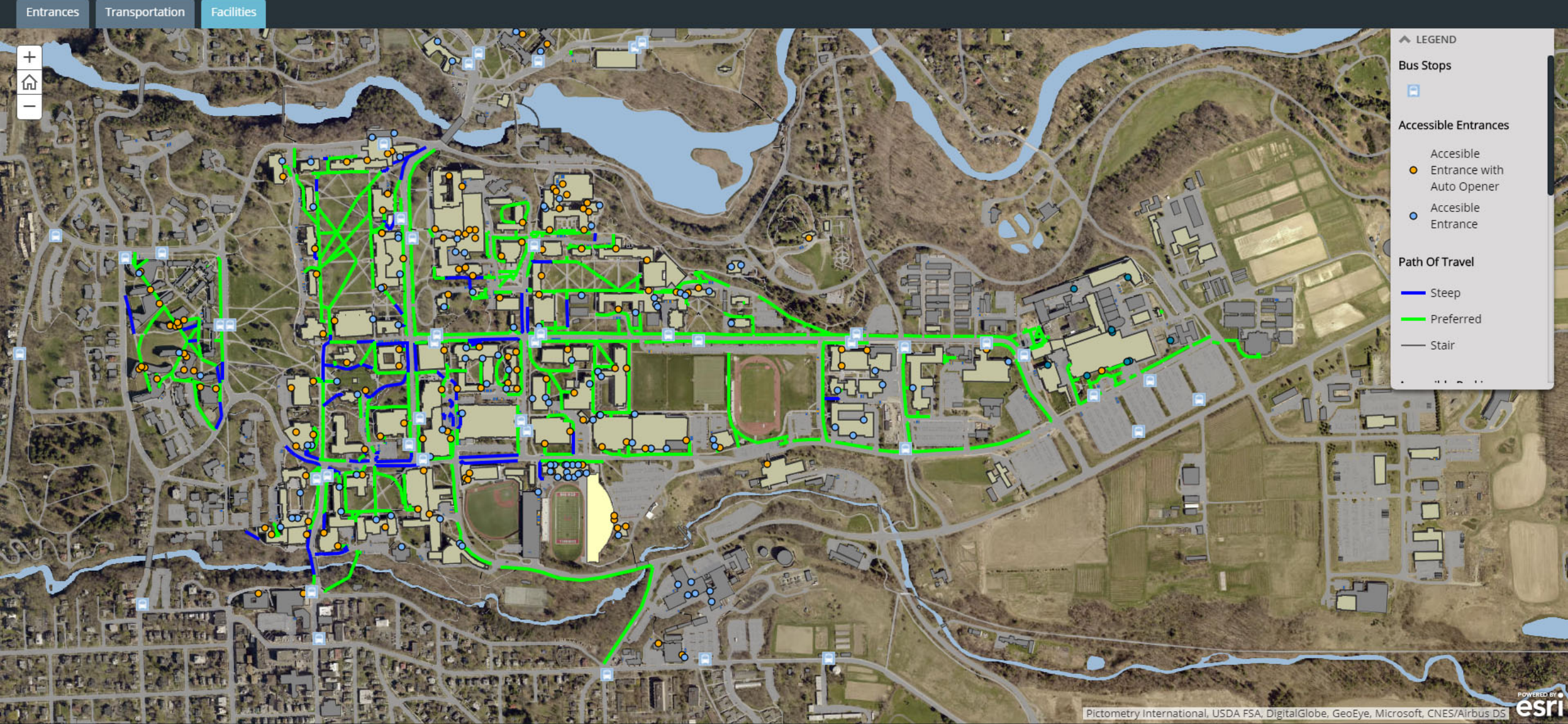


#### Pavement



#### Sidewalks







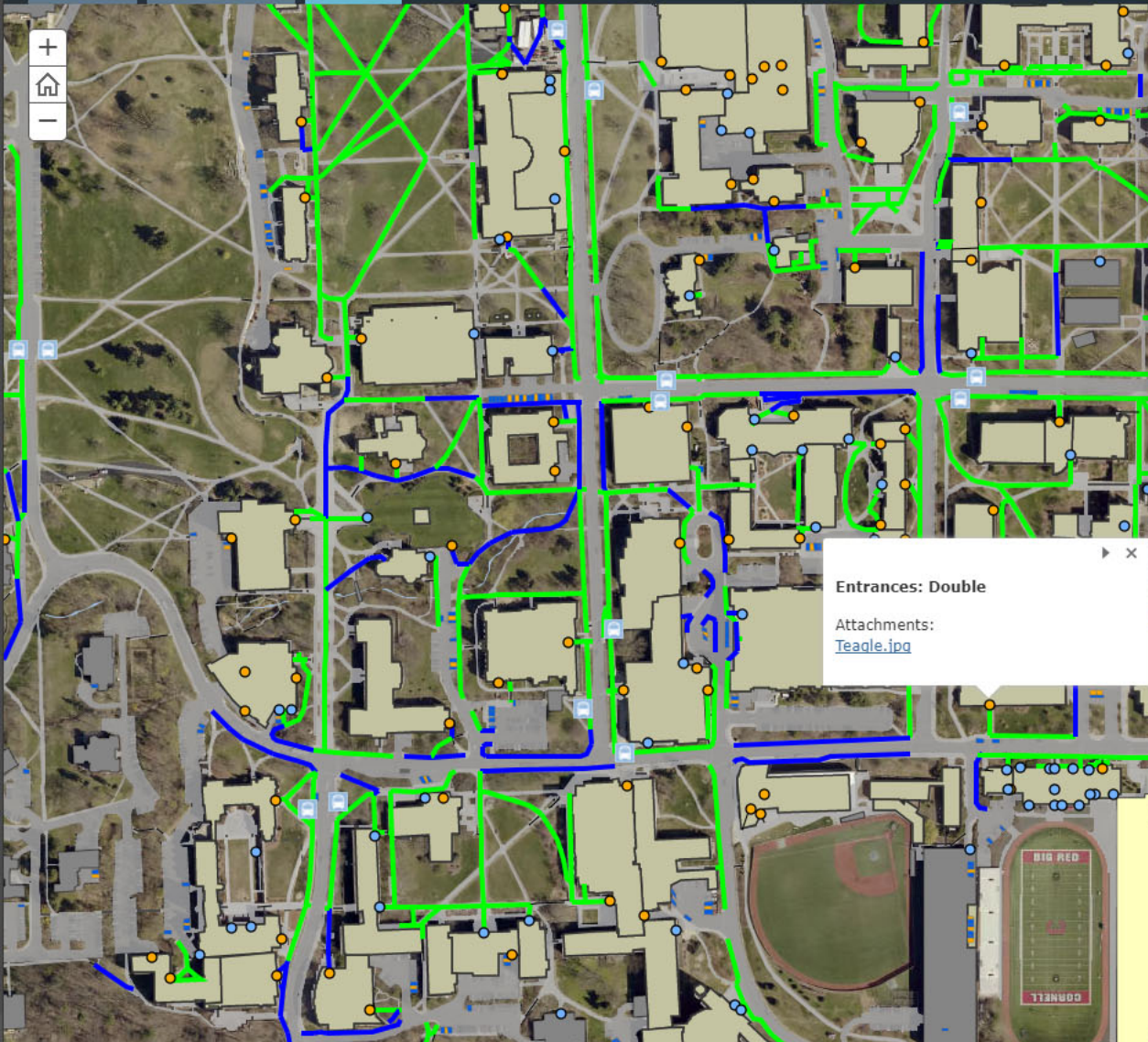
Accessibility at Cornell University

EntrancesTransportationFacilities

+

Home

-



Entrances: Double  
Attachments:  
[Teagle.jpg](#)

1848 (1280x960)


Secure

https://services3.arcgis.com/m3XdyJh55Jnxxk0l/ar...

Star icon

Print icon

Menu icon



LEGEND

Bus Stops

Accessible Entrances

Path Of Travel

Powered by

esri

2:30 PM

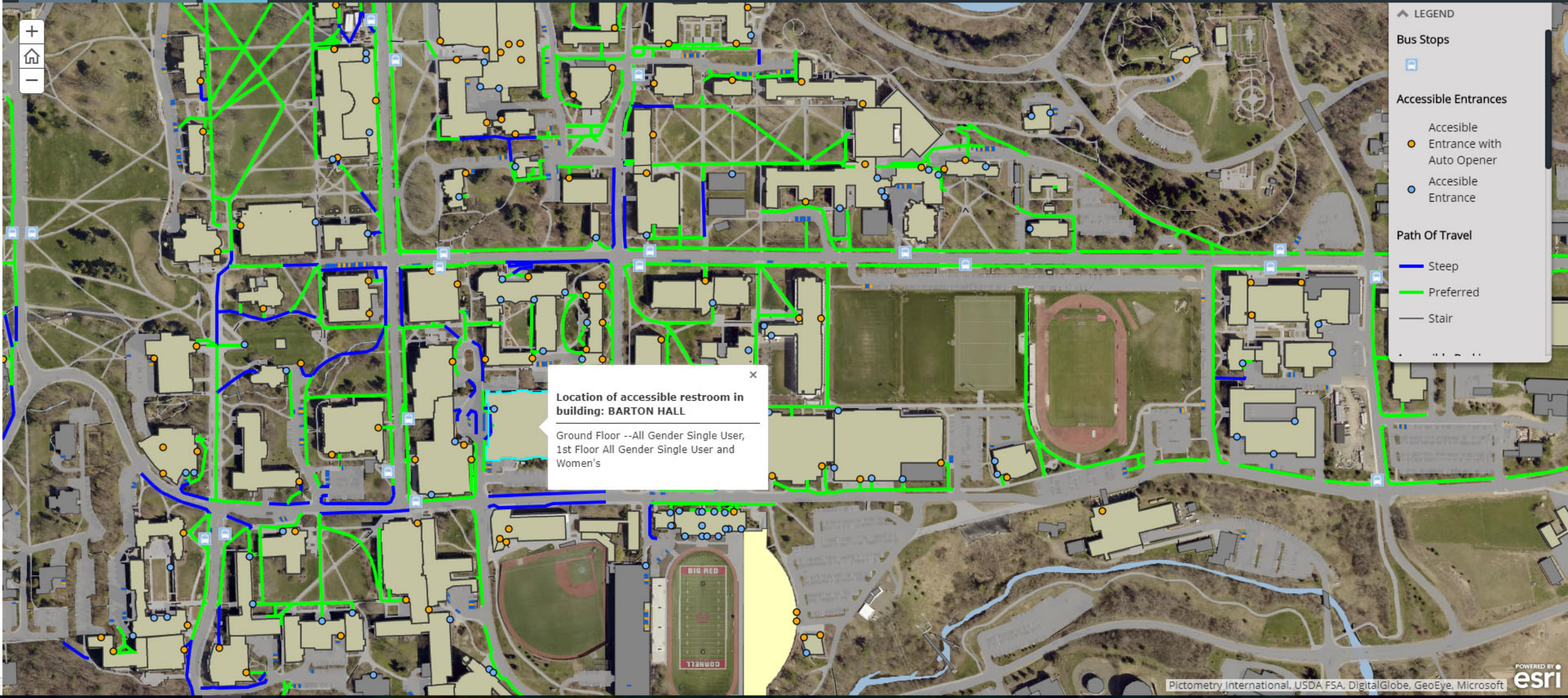
10/16/2016



# Accessibility at Cornell University

Cornell University

Entrances Transportation Facilities







# Next Steps

- Refinement of data and information added
- Continual use of information to determine accessibility deficiencies
- Interactive map to a Story Board format
- Additional information to include:
  - Elevator data
  - Assistive Listening Systems (ALS) locations and available headsets
  - Highlighting unique areas

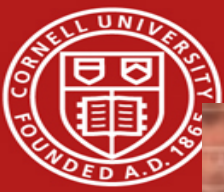




Cornell University

# Projects of Significance

- Schoellkopf Seating
- Sage Chapel
- 391 Pine Tree Road
- AD White House
- Instructional Space
- Space Sciences
- Exterior Path of Travel Projects
- Teagle Hall
- Accessibility Blitzes
- Libraries
- Toilet Facilities



Cornell University













Cornell University

# Questions?